

Early Years Network Meeting

Wednesday 13th May 2026

09:30 – 10:30

OR

19:00 – 20:00



Agenda:

- Welcome (SK)
- Early Help 0-5 team with Alex Morris Perkins
- Best Start in Life with Rosie Boardman
- Talkboost tracker support – EYSSO's
- General Reminders

Early Help

An Introduction

What is Early Help?

Some children will need extra support in order to be healthy, safe and to achieve their potential – this is Early Help.

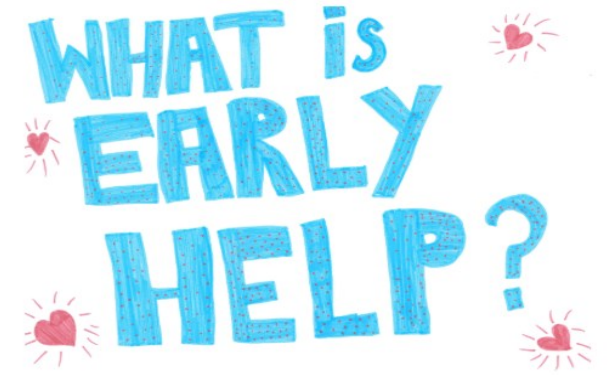
This is support for children, young people and families that reduces the chance of a problem getting worse, and which at the same time improves a family's resilience and outcomes.

It's not a single service, but a network of services delivered by a range of professionals e.g. local authority, health, early years, education and voluntary sector organisations.

Early Help can be led by a range of professionals who have relationships with families who *need help*.

Targeted Early Help is for families who *need more help* and is delivered by Support Workers in the Family Hubs.

WHAT is
EARLY
HELP?



How do we find out what help families need?

What children tell us through observations, their play, and interactions with us and others.

What parents tell us and ask us about.

What other professionals tell us.

We can use the Circle of Support categories to help us to have conversations about what is working well for a family so we can build on this, and what needs the whole family has so we can offer the right support.



The Early Help Process

Gain family agreement.

Early Help Assessment (uses the circle of support categories)

Whole Family Action Plan

Team Around the Family meetings (TAF's) to review the action plan.



EH
ASSESSMENT

A colorful graphic with the letters 'EH' in large, bold, multi-colored font (E is teal, H is pink) above the word 'ASSESSMENT' in a smaller, multi-colored font. Small red hearts are scattered around the text.



ACTION
PLAN

A colorful graphic with the words 'ACTION' and 'PLAN' stacked vertically in a multi-colored, hand-drawn font. The letters are in shades of red, yellow, blue, and pink.



TAF MEETING

The words 'TAF MEETING' in a simple, hand-drawn font.



Targeted Early Help

Family Hub team bases: North Team in Market Drayton & Oswestry, Central Team in Shrewsbury, South Team in Bridgnorth and Ludlow.

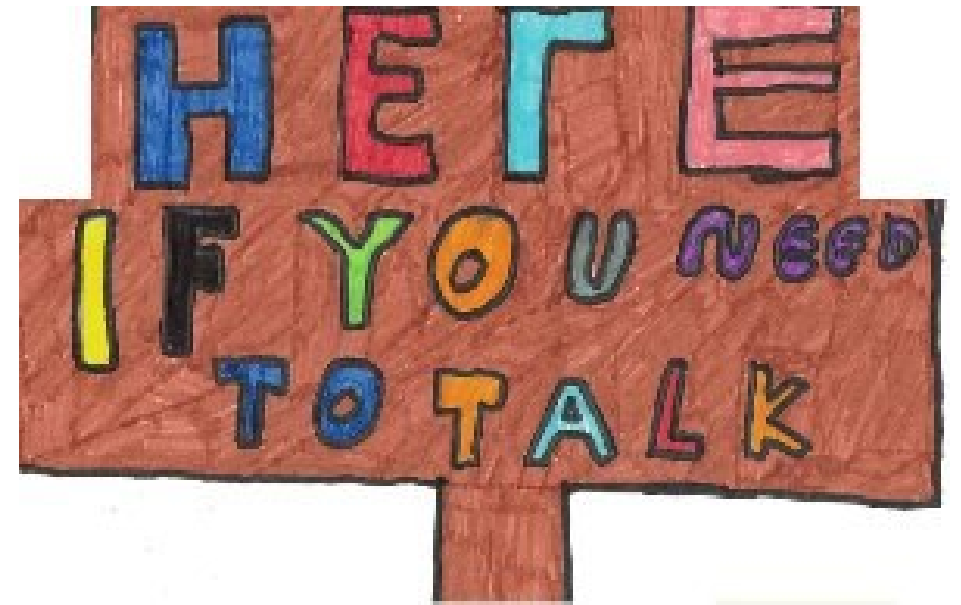
Family Support Workers from the hubs support families with children aged 0-19 years.

Family Support Workers from the 0-5 Team support families who are expecting a baby and with children aged up to 5 years. This team is county wide.

We support all members of the household.

Gathering child voice is a really important part of the assessment.

We involve other professionals in supporting the family, according to their needs, creating a package of support.



About the family: Two children aged 1 year and 4 years, living with mum and dad.

Why the family needed Early Help – Nursery were concerned about mum struggling with 4 year olds behaviour, and that he may be showing some signs of additional needs, his sleep was very poor. The 4 year old was on a PCP in nursery to support his personal, social and emotional development.

Why the family needed Targeted Early Help – In addition to the above, mum had ADHD, dad works full time and not able to help at night times, family had a lack of support network. Nursery tried to arrange Mum to have parenting and sleep advice but she had not accessed these so it was felt more help was needed.

What worked well – nursery attending Team Around the Family meetings to be part of the conversation about the family's needs and offering how they can help the 4 year old as part of the action plan.

Outcomes -

Nursery supported further with the 4 year old's emotions and extra transition sessions for primary school.

Mum agreed to attend Sleep Tight course.

Mum is receiving mental health support following GP appointment, and support with referral to specialist service from Family Support Worker.

Mum and dad have taken part in the parenting support sessions delivered by Family Support Worker and feeling more confident.

Family Hub Drop-ins

Family Hub Drop-ins are for parents of children of any age to attend and ask for advice and support from the Family Support Worker and other professionals present.

Parents can also attend with their children aged 0-5 to play and talk to other families.

Each hub also has **Open Access Health Visitor Clinics** which is also attended by Early Help Family Support Worker.



Shropshire Health Visiting
Together for better health

Shropshire Together
Community and Family Directory

NHS
Shropshire Community Health
NHS Trust

OPEN ACCESS CLINICS

@ShropshirePublicHealthNursingService

Follow Us on Facebook for the latest dates



Come along to our open access clinic for health advice, information and support for you and your baby/child. No appointment needed.

- EMOTIONAL HEALTH & WELLBEING
- GROWTH MONITORING & HEALTH ADVICE
- INFANT FEEDING & INTRODUCING SOLIDS SUPPORT
- DEVELOPMENT, BEHAVIOUR & SLEEP SUPPORT

0333 3583654 SMS 07520 635212

Coffee & chat

Free info, advice & support

You can get free information, advice and support on all aspects of family life, at our Family Drop-Ins. Come along for a coffee and a chat, and see how we can help you with:

- Family life
- Parenting support (including child development, behaviour, sleep and relationships)
- Domestic abuse support
- Money worries
- Housing support
- Special Educational Needs and/or Disabilities (SEND)

and much more!

Find your local drop-in here



Parenting Support

The Parenting Team offer virtual and face to face parenting groups – Understanding Your Child to Teen, SEND groups, and Sleep Tight Workshops.

They also offer Parenting Help and Support Line.

Parents can also access online learning from the Togetherness website for free with code 'DARWIN18'. [Home - Togetherness](#)



Shropshire Parenting Help and Support Line

01743 250950

Mon - Thurs, 9.30am - 4.30pm
Fri, 9.30am - 3.30pm

No judgment, just support.

Child Development
Babies
Behaviour
Toddlers
Twins
Teens
Family life
Help
Sleep

Find out more here



Shropshire Supporting Families through Early Help



Early Help Network Meetings

- These meetings take place termly in the 5 Family Hub areas, a mixture of face to face or online.
- They are an opportunity for professionals and agencies working with Children, Young People or their families to listen to guest speakers, receive updates about Early Help.
- Those attending can share information about services available or issues affecting families within the relevant network area and to share news and good practice.
- Please mail helena.leclezio@shropshire.gov.uk if you wish to be on the distribution list for these meetings.

Integration Consultation Panels (ICPs)

- The Integration panels bring together multi - agency partners based in Shropshire.
- The Teams provide an efficient means of considering and exploring how best to identify and meet the needs of the families, children and Young People, where the current situation is negatively impacting on them.
- Referrals to this process require agreement from the family, and a referral can be made on the form that can be found here. [Integration practitioner teams and consultation panels | Shropshire Council](#)

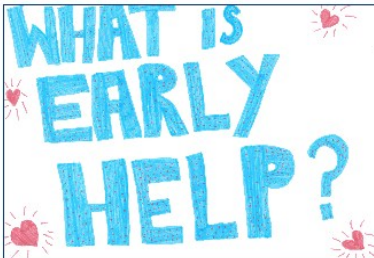


How can we help you?



Early help

[Home](#) > Early help



What is early help?



What is the early help offer?



Early Help Strategy



E-HAST (Early Help and Support Team)



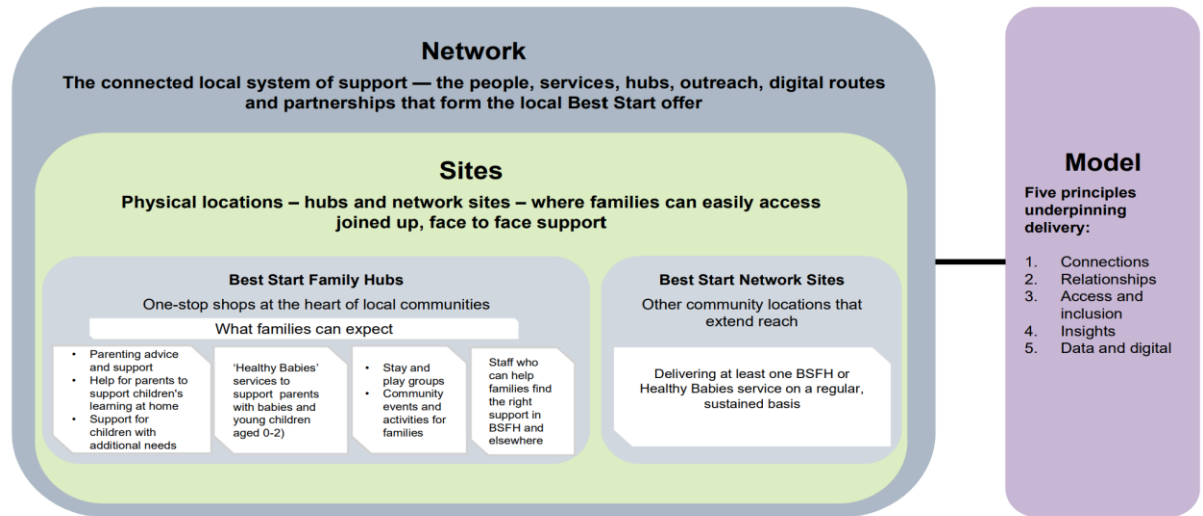
Any questions?

- Strategy published on **7th July 2025** to bring together early years and family services to improve child development.
- Backed by **£1.5 billion over three years** to strengthen early intervention and long-term outcomes.
- Aims to help achieve the national ambition that **75% of children reach a Good Level of Development (GLD) by 2028**. Shropshire's target is **77%** and **56%** for children accessing FSM.
- Funded by DfE to create a more **integrated, accessible support system** for families.
- Combines key elements of **Sure Start, Family Hubs and Start for Life** to offer cohesive family support nationally.



- A key element is the development of **BSIL family hubs** and wider network sites.
- Deliver **Home Learning Environment** groups and parenting support for families particularly those who need it most.
- Bring a range of services **‘under one roof’** to support families including HV support, Infant feeding, HLE groups etc.
- Options are being explored to identify potential additional BSIL hub locations to **improve access** for wider communities.

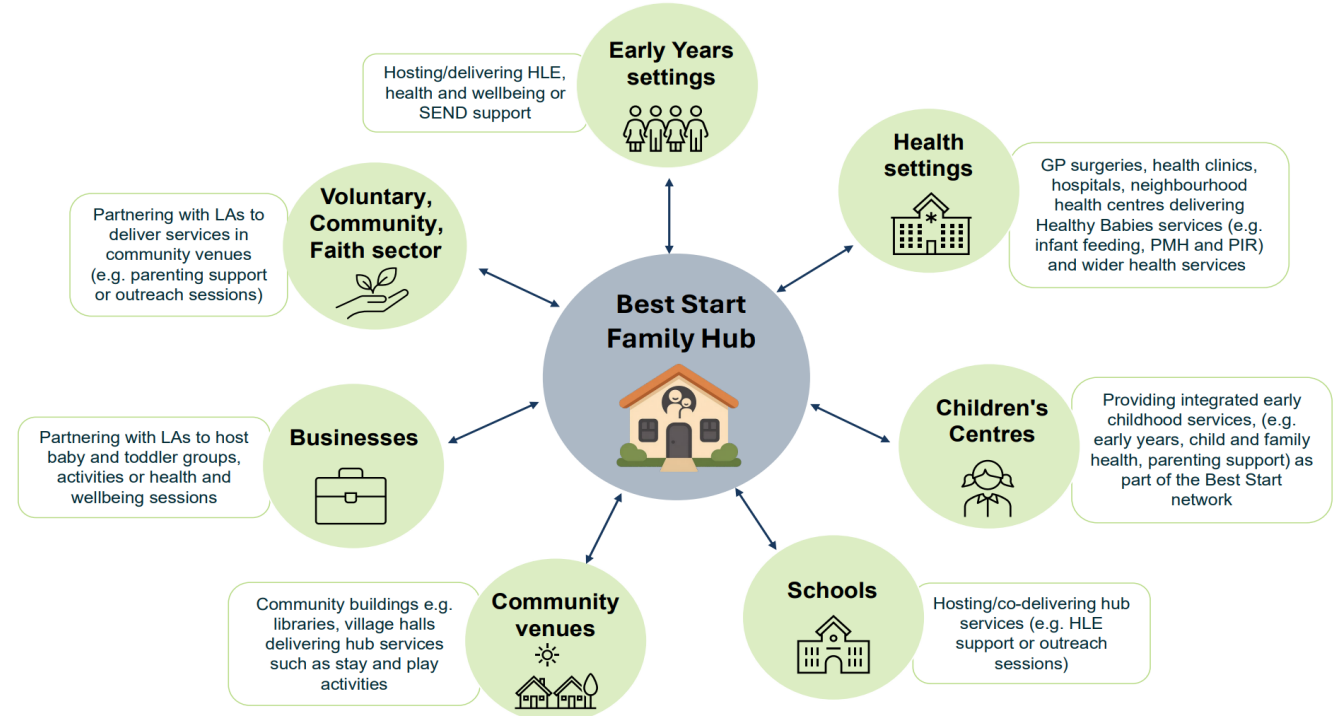
Figure 1: The Best Start Family Hubs Framework – overview



Best Start in Life Early Years Settings

- The Best start in life programme also aims to increase support for Early Years settings as it recognises them as **key partners** in this initiative.
- Develop further **inclusion funding** for universal support within settings (IEYF).
- Support in the delivery of **EYFSP workshops** through workshops to the sector.
- Develop opportunities for **co-production** in shaping initiatives for families.

Figure 2: Illustrative examples of potential network sites



Talkboost Tracker

- Please can we encourage settings to use the online tracker. The tracker makes graphs to share with parents and professionals.
- The online tracker helps measure and track cohort progress following Talk boost groups.
- Sharing with the local authority helps track impact and identifies area's of where support might be needed in the future.

[Tracker Tutorial Video](#)

[Early Talk Boost Tracker Log in](#)

[Early Talk Boost Resources](#)

Support: info@speechandlanguage.org.uk



Early Talkboost Training Dates:

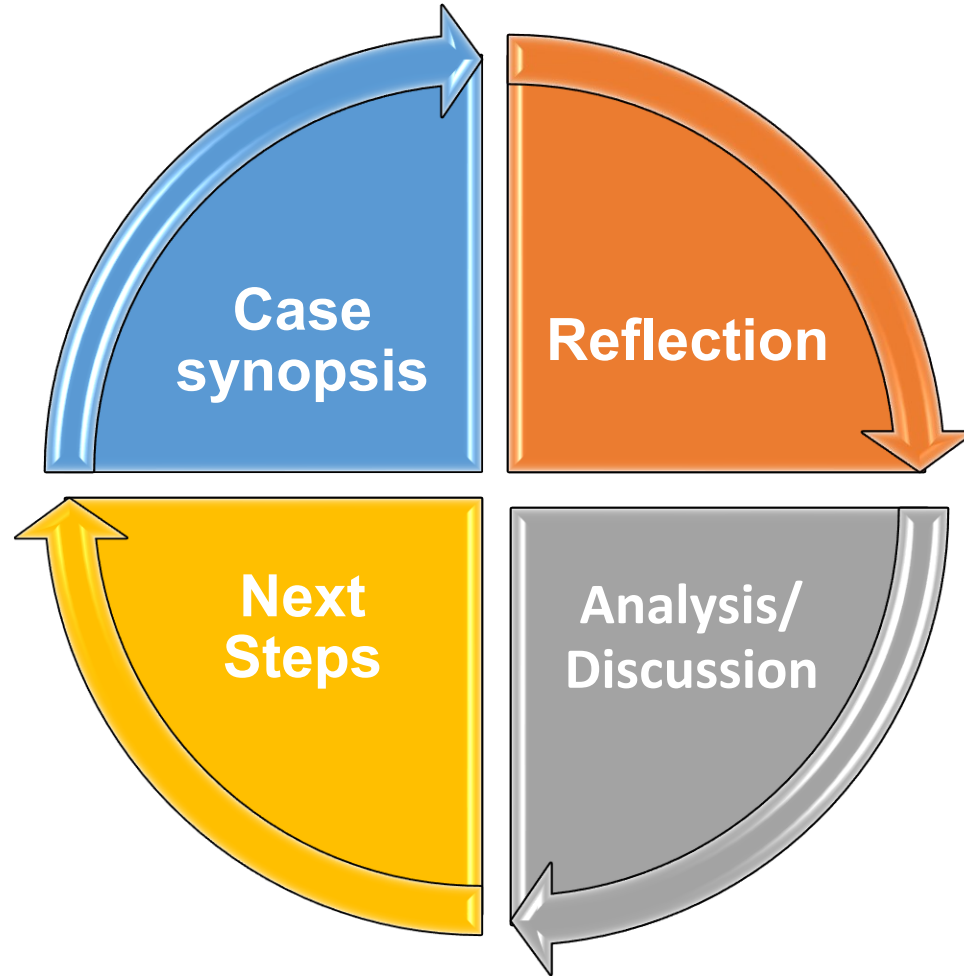
Session 1: Wednesday 3rd June 18.00-20.00

Session 2: Wednesday 10th June 18.00-20.00

Please note both session's need to be attended.



EY SEND Solution Circles



- These are not training events
 - EY SEND Solution Circles are peer action focused sessions
 - Held monthly with a new evening session to support childminders attendance
-
- Practitioners will bring an anonymous case of a child where they have tried strategies and now feel they need a little more support.
 - Practitioners will listen to others' cases, reflect, discuss and offer ideas to try.
 - Practitioners will take away up to three ideas to try. A peer will be buddy with you to check in, in a few weeks.



General reminders from the EYFS support team:

- The deadline for the submission of your Summer term Actual headcount claim is Sunday 24th May 2026.
- The Interim Headcount window for the Autumn term is due to open on Monday 6th July 2026. The Interim headcount is where you enter your **weekly** hours totals for each age group that you're claiming for and is what your first 3 funding payments of the term are based on.
- All headcount opening and closing dates are available on the homepage of the Portal ([Sign In - Synergy](#)).



Early Years Provider Agreement

- Less than 4 weeks remaining to sign
- Please email Dan.Steele@shropshire.gov.uk if you have not received a link to the agreement
- If we do not receive a signature by 08/06/26, we cannot post funding for Autumn term 2026



Working Together to Safeguard Children – March 2026

Key changes introduced in
Working together to
safeguard children 2026

The Children's Wellbeing and
Schools Act 2026

Crime and Policing Act 2026